

QUICK SHORE 260 series



The Quick Shore 260 series is specifically intended for shoring depths of up to 2.00 m.

- ▶ This system is preferred for laying and repairing house connections, as well as gas and water pipes
- ▶ The entire structure weighs between 33.0 and 40.0 kg



ALUMINIUM POST

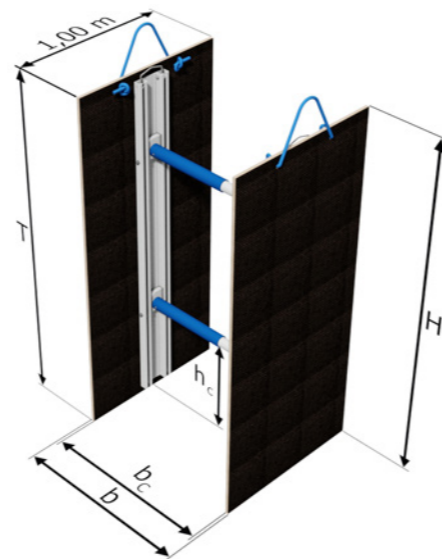
Aluminium post length	Max trench depth T	Pipe clearance height h_c	Permissible boom bracing load	Weight per frame
[m]	[m]	[m]	[kN/m]	[kg]
1.50	1.50	0.56	23.5	33.0
2.10	2.00	0.56	23.5	40.0

PLATE

Plate Width	Height H	Permissible earth pressure	Limit state design load e_d / Characteristic system resistance R_k	Weight per plate
[m]	[m]	[kN/m ²]	[kN/m ²]	[kg]
1.00	1.50	12.0	18.0	21.0
1.00	2.10	12.0	18.0	30.0

HYDRAULIC STRUT

Type	Working width b_c		Trench width b		Permitted compressive force [kN]
	min	max	min	max	
1	0.45	0.68	0.49	0.72	53.0
2	0.55	0.88	0.59	0.92	53.0
3	0.65	1.08	0.69	1.12	53.0
4	1.00	1.60	1.04	1.64	53.0



ACCESSORIES

You can find the accessory parts

- ▶ Release hook
- ▶ Pipe hook

for the Quick Shore 260 series on pages 88–91.